

6 Llys Y Dderwen, Betws yn Rhos, Conwy, LL22 8AQ

£419,950

🛏️ 4 🍽️ 2 🚗 2

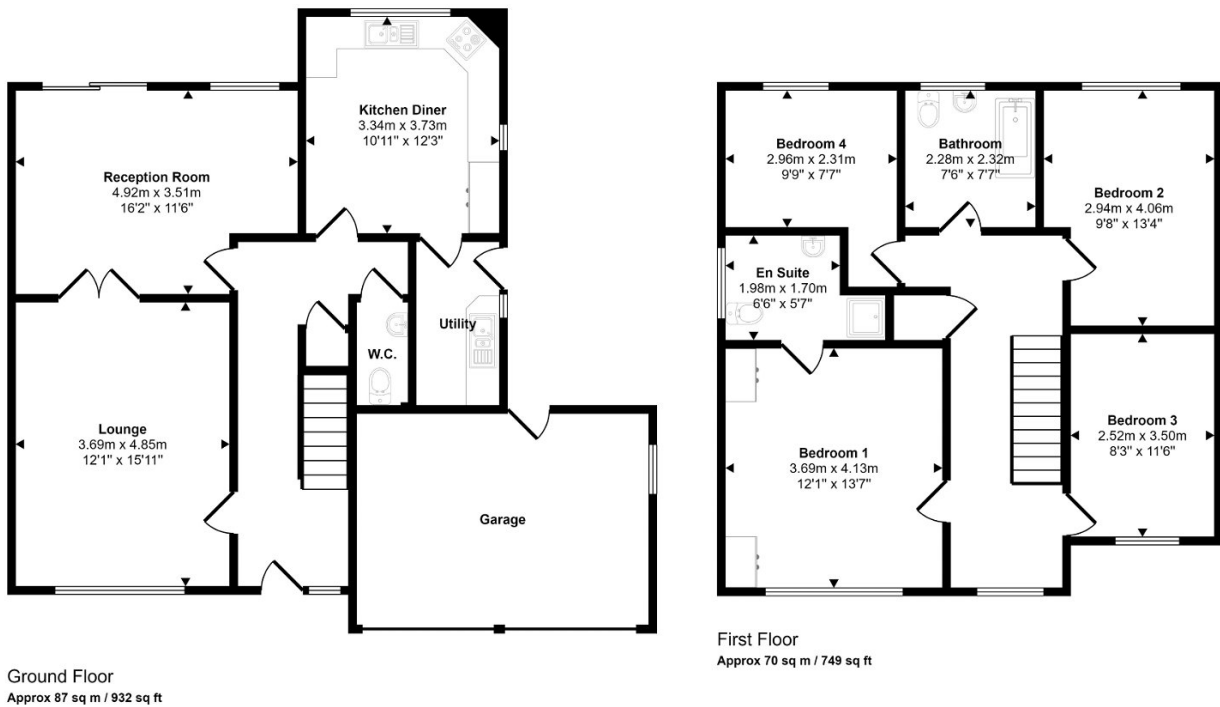


This spacious family house is located within a small, quiet and select development close to the village centre. This detached property offers plenty of attractive features including leaded windows, a separate dining room, kitchen plus utility room, master bedroom with en suite and also a double garage. An added bonus is the secure parking to the side, behind timber gates, ideal for a motorhome/boat. There is mains gas central heating and double glazing. Betws yn Rhos is a delightful rural village, just fifteen minutes drive from Abergele. The village offers a shop/Post Office, primary school, golf course and local public house/restaurant. Further amenities are available in the nearby towns plus the coast and A55 are also within five miles. No forward chain.

Key Features

- Detached family house
- Rural country village location
- Two reception rooms
- Four bedrooms
- En suite to master
- Double garage
- Private garden
- EPC rating - C
- Freehold
- Council tax band - F

Approx Gross Internal Area
156 sq m / 1681 sq ft



This floorplan is only for illustrative purposes and is not to scale. Measurements of rooms, doors, windows, and any items are approximate and no responsibility is taken for any error, omission or mis-statement. Icons of items such as bathroom suites are representations only and may not look like the real items. Made with Made Snappy 360.